

# SPACEMAKER PORTABLE BUILDING

High Quality, Single Module Buildings



 [ecomod.ie](http://ecomod.ie)

 01 862 3702

 [sales@ecomod.ie](mailto:sales@ecomod.ie)

# TABLE OF CONTENTS

- PAGE 1**    ➤ The SpaceMaker Portable Building
- PAGE 2**    ➤ Common Uses
- PAGE 3**    ➤ Common Sectors
- PAGE 4**    ➤ Features of the SpaceMaker Portable Building
- PAGE 5**    ➤ Why Choose EcoMod?
- PAGE 6**    ➤ Sample Layouts
- PAGE 7**    ➤ What to Expect
- PAGE 8**    ➤ Customer Testimonials
- PAGE 9**    ➤ Comparison Chart

SPACEMAKER PORTABLE BUILDING

# Fits Any Space. Fits Any Need.

**Versatile, quality, single module buildings  
from EcoMod**

The SpaceMaker portable building is a high-quality “plug and play” unit that can be used for many different purposes. These modular buildings come in small, medium and large sizes to fit your needs and multiple units can be linked together or double-stacked with external staircases fitted.



## COMMON USES

# Customizable, portable and ready to use



Single-module buildings are a perfect fit for many different sectors. These versatile structures will work perfectly wherever you need them, and whatever you need them for. Portable and customizable, they can be set up quickly to meet your needs!

### Common uses include:

- Office spaces
- Meeting rooms
- Training rooms
- Teaching spaces
- Canteen amenities
- Security offices
- Warehouse offices
- Plus many more!

Internal layouts can also be custom fitted, as per your requirements, to provide:



Kitchenette



WC



Partitioned Offices



Locker Room Fit-Outs

## COMMON SECTORS

# Modular buildings that can be used in any sector

Single module buildings are the future of business, allowing you to scale and customise your space as needed, for a fraction of the cost of a standard building. And, because they are manufactured off-site, they can be installed with minimal disruption to your business or organisation.

Our SpaceMaker modular buildings can be used in any sector from manufacturing and education right through to logistics and transport – they're perfect for any site that requires a flexible solution!



## Common sectors include:



Manufacturing



Healthcare



Education



Logistics



Transportation

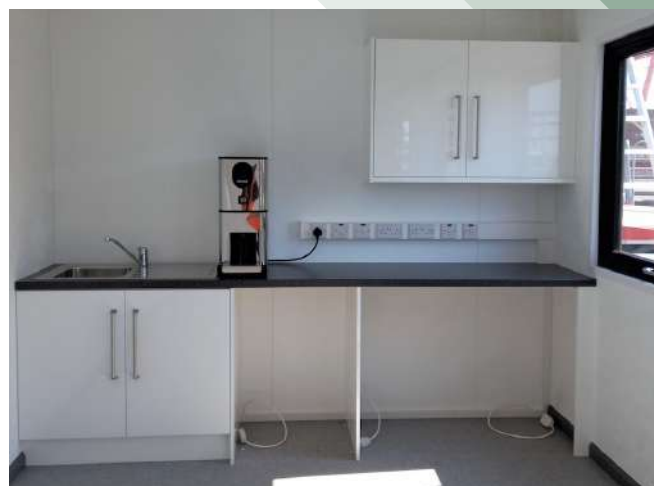


Plus Many More!

## FEATURES OF THE SPACEMAKER PORTABLE BUILDING

# Grow your business with the right space and infrastructure.

- 2.4m ceiling height
- External “plug & play” power connection
- Insulated floor & ceiling
- Energy efficient heating & lighting
- A+ rated double glazed windows
- External walls are galvanised steel with a plasticol-coated finish
- Secure entrance door c/w 5 pin locking system
- High-quality welded grey vinyl flooring
- Double sockets as required



WHY ECOMOD

# Why Choose A SpaceMaker Modular Building From EcoMod?

We pride ourselves on building personal relationships with our clients that enable us to truly deliver the modular buildings that best fit the needs of their business.

- High quality of finish and attention to detail
- Modern contemporary aesthetics
- Purchase option offers bespoke design choice
- Excellent customer service
- Value for money
- Built in Ireland, supporting Irish jobs

Get in touch today and let us help you to find the best fit for your business.

 [ecomod.ie](http://ecomod.ie)

 01 862 3702

 [sales@ecomod.ie](mailto:sales@ecomod.ie)



## SAMPLE LAYOUTS

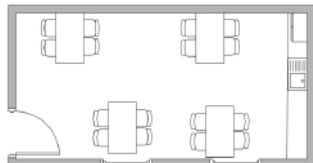
# Let us help you design the perfect space for your business.

The SpaceMaker can be configured and customised to meet almost any set of requirements. Our team has years of experience in helping customers to create the perfect modular buildings for their needs, right down to selecting the furniture! So design your own or speak to us today and let us design the SpaceMaker plus that best meets your needs now, and for the years to come.

SpaceMaker Sample Layout 1  
6m x 3m Open Plan Office Space



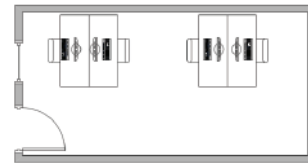
SpaceMaker Sample Layout 2  
6m x 3m Canteen



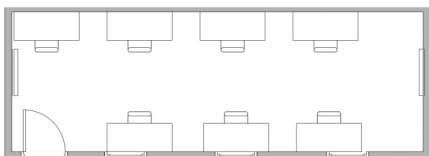
SpaceMaker Sample Layout 3  
6m x 3m Partitioned Office Space



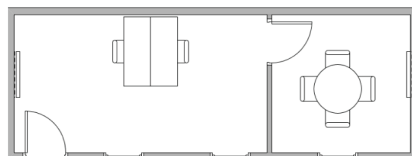
SpaceMaker Sample Layout 4  
6m x 3m Office Space



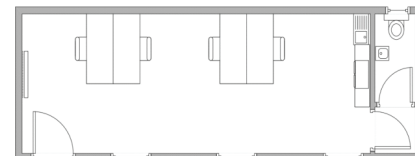
SpaceMaker Sample Layout 5  
9m x 3m Open Plan Office



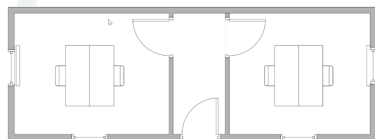
SpaceMaker Sample Layout 6  
9m x 3m Office & Meeting Room



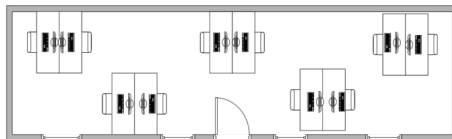
SpaceMaker Sample Layout 7  
9m x 3m Office with WC & Coffee Dock



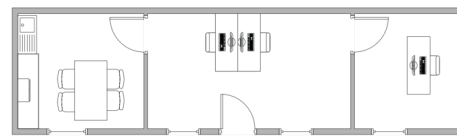
SpaceMaker Sample Layout 8  
9m x 3m Split Office



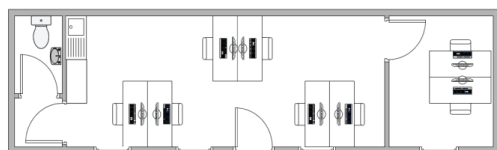
SpaceMaker Sample Layout 9  
12m x 3m Open Plan Office



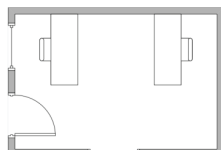
SpaceMaker Sample Layout 10  
12m x 3m Split Office with Kitchen



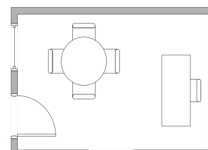
SpaceMaker Sample Layout 11  
12m x 3m Split Office with WC & Coffee Dock



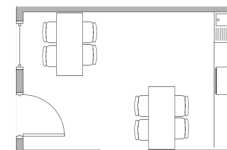
SpaceMaker Sample Layout 12  
4.8m x 3m Open Plan Office



SpaceMaker Sample Layout 13  
4.8m x 3m Office/ Meeting Room



SpaceMaker Sample Layout 14  
4.8m x 3m Canteen





# What to Expect



## Quick Response Times

From your first contact with us, one of our team will be in touch with an immediate callback to help assess your modular building needs.



## Additional Information

Based on your needs, our team will send you additional videos and brochures to help inform you about the products that best suit your needs.



## Site Survey

At the earliest opportunity, one of our team will arrange a site survey to your premises to really assess your needs and the products that best suit the space you have available.



## Initial Proposal

Based on a deep understanding of your needs, your organisation and the space available, we will provide you with a detailed proposal for your project.



## Final Proposal

With feedback from you and your team, we will develop your final product designs and negotiate a final agreement.



## Installation

Our team will complete the installation of your modular buildings in a streamlined and efficient manner, minimising disruption to your business. A single unit can usually be installed in just 1 day!



## Customer Aftercare

Our business is built on maintaining excellent customer relationships and providing reliable and responsive aftercare.

## CUSTOMER TESTIMONIALS

# Kind words from our customers

## Top class!

Thanks a million again for all your help with our event. The quality of the units you supplied were top class and well received by everybody including the Minister.

★★★★★ - Glanbia

## Easy to do business with

The enquiry process was seamless. The team responded in a timely fashion and informed us of the products most suited to EirTrade's needs. EcoMod were easy to do business with and the product was fit for purpose.

★★★★★ - Eirtrade

## The modular buildings are a very good quality

The reason I went to EcoMod was that their quality is always good. Our enquiry was processed quickly and EcoMod allowed us to use our own transport, giving us a helping hand to show us how to handle the units. The EcoMod staff were very good throughout the process and the modular buildings are of very good quality.

★★★★★ - Alucraft

## More than we could have imagined

We couldn't recommend Ecomod anymore if we wanted to. They have been brilliant to deal with over the period of the project and would provide any business with the highest level of product, after sales service and professionalism wanted from any company. Professional is the best word to describe the EcoMod staff but also very engaging on a personal level which made the process more enjoyable and meaningful. The buildings met our expectations more than we could have imagined. It was one thing seeing it on a busy lot as a display but having it installed and furnished made the whole project worthwhile. We now have a space to run more efficiently as a business. From a verbal briefing, to a site visit, everything we could have needed was provided. We hope to deal with and use EcoMod for further projects in Davies over the next number of years.

★★★★★ - Davies Group

## Excellent quality and finish

Fully compliant classroom buildings: Quick and efficient response. Excellent site meetings before and during the process. I would have no hesitation in recommending EcoMod to any potential customer. It was a seamless process and the company were a joy to work with. The buildings met our expectations 100%. Excellent quality and finish. The EcoMod staff were friendly, approachable, knowledgeable and informative throughout the entire process. If you wish to have a trouble-free experience, I would have no problem recommending EcoMod.

★★★★★ - Oatlands College

## We use Ecomod for all our office accommodation

We use Ecomod for all our office accommodation and the units have proved very successful to date. Professional & friendly staff, very good personal service and the delivery & installation process was excellent.

★★★★★ - Foxpak

## Excellent!

The SpaceMaker portable buildings exceeded our expectations. Our needs were bespoke and the EcoMod team's attention to detail was excellent. We found the whole enquiry & design process as well. Everyone was very helpful and engaging throughout the entire process. Notwithstanding the combined challenges of COVID-19 and Brexit, timelines for the delivery & installation process were clearly communicated and attention to detail was notable. We found the EcoMod staff engaged and customer-focused at all times. Again, the products and services provided by EcoMod to Dublin Port Company were excellent throughout the entire project, from the enquiry stage right to handover.

★★★★★ - Dublin Port Company

## Exceeded our expectations. Excellent build and design quality!

The buildings provided by EcoMod exceeded our expectations, with excellent build and design quality. The design team did everything possible to ensure the buildings met our requirements. The delivery & installation process was excellent. Frankie and Marty were very professional, and the whole process worked very well. The EcoMod staff were very helpful, friendly and professional throughout the entire process.

★★★★★ - Farm Lab Diagnostics

# Comparison Chart

	Common uses:	Features:
<b>SpaceMaker</b>	<ul style="list-style-type: none"> <li>• Office spaces</li> <li>• Meeting rooms</li> <li>• Training rooms</li> <li>• Teaching spaces</li> <li>• Canteen amenities</li> <li>• Security offices</li> <li>• Warehouse offices</li> <li>• Plus many more!</li> </ul>	<ul style="list-style-type: none"> <li>• 2.4m ceiling height</li> <li>• External "plug &amp; play" power connection</li> <li>• Insulated floor &amp; ceiling</li> <li>• Energy-efficient heating &amp; lighting</li> <li>• A+ rated double glazed windows</li> <li>• External walls are galvanised steel with a plasticol-coated finish</li> <li>• Secure entrance door c/w 5 pin locking system</li> <li>• High-quality welded grey vinyl flooring</li> <li>• Double sockets as required</li> </ul>
<b>SpaceMaker Plus</b>	<ul style="list-style-type: none"> <li>• Open-plan offices</li> <li>• Large canteen spaces</li> <li>• Classrooms</li> <li>• Training Rooms</li> <li>• Entire office suites</li> <li>• Plus many more!</li> </ul>	<ul style="list-style-type: none"> <li>• 3.6m width, up to 15m long with 2.4m internal ceiling height</li> <li>• Superior floor and ceiling insulation</li> <li>• Building supported by a steel chassis</li> <li>• High-quality welded grey vinyl flooring</li> <li>• External walls are galvanised steel with a plasticol-coated finish</li> <li>• A+ rated double glazed windows with trickle vents &amp; low-E glass</li> <li>• Secure entrance door with 5-pin locking system</li> <li>• Energy-efficient LED lighting</li> <li>• Lot 20 compliant energy-efficient heaters</li> <li>• Emergency lighting</li> <li>• Internal layouts and window &amp; door positions can be designed to meet your requirements</li> </ul> <p><b>Optional Features:</b></p> <ul style="list-style-type: none"> <li>• Climate Control</li> <li>• Mid-level conduit for electrical fit-out</li> <li>• Data Points</li> <li>• Smoke Detection and Fire Alarm</li> </ul>
<b>EcoSecure Anti-Vandal Building</b>	<ul style="list-style-type: none"> <li>• Site Offices &amp; Security Buildings</li> <li>• Drying Rooms &amp; Canteens</li> <li>• Meeting &amp; Training Rooms</li> <li>• WC &amp; Shower Facilities</li> <li>• Secure Storage</li> <li>• Plus many more!</li> </ul>	<ul style="list-style-type: none"> <li>• Fully compliant with all health and safety regulations</li> <li>• Sliding window shutters to minimise the risk of injuries</li> <li>• Non-rusting external steel finish</li> <li>• External 32amp plug point</li> <li>• Insulated flooring provides comfortable &amp; secure working facilities</li> <li>• Individually adjustable with removable telescopic jack legs for easy levelling and double stacking</li> <li>• Removable wall panels allow units to be linked together to fit any need</li> </ul>
<b>EcoSpan Modular Building Solution</b>	<ul style="list-style-type: none"> <li>• Open-plan offices</li> <li>• Large canteen spaces</li> <li>• Classrooms</li> <li>• Training Rooms</li> <li>• Entire office suites</li> <li>• Plus many more!</li> </ul>	<ul style="list-style-type: none"> <li>• Full galvanised steel frame</li> <li>• Kingspan micro rib profile steel finish</li> <li>• 2.7m ceiling height</li> <li>• 60-minute fire rating</li> <li>• High U value</li> <li>• A+ rated double glazed windows</li> <li>• Certified internal electrics including double sockets, LED lights, energy-efficient heating</li> <li>• ELCB internal consumer units single phase</li> <li>• Double sockets as required</li> <li>• Optional external colours &amp; finishes</li> </ul>
<b>EcoPod Mobile Welfare Unit</b>	<ul style="list-style-type: none"> <li>• Construction</li> <li>• Events</li> <li>• Solar farm installation</li> <li>• ESB, rail &amp; utilities</li> <li>• Public works</li> <li>• Emergency services</li> <li>• Plus many more!</li> </ul>	<ul style="list-style-type: none"> <li>• Towable units</li> <li>• Fully equipped canteen space</li> <li>• Separate WC &amp; drying room</li> <li>• Easy to clean stainless steel surfaces &amp; fittings</li> <li>• Site-ready with fuel &amp; water</li> <li>• Unique hydraulic axles for setup in 30 seconds</li> <li>• Carbon monoxide detector</li> <li>• USB charging points</li> <li>• Available in a variety of sizes (from 16ft to 20ft)</li> </ul>



 [www.ecomod.ie](http://www.ecomod.ie)

 01 862 3702

 [sales@ecomod.ie](mailto:sales@ecomod.ie)

