

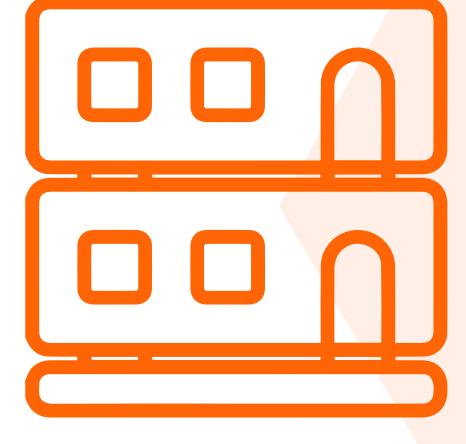
How To Select The Right Modular Site Accommodation

Good quality site accommodation is vital for meeting health and safety regulations on construction sites, as well as providing essential space for staff and visitors. Whether you are looking to build a canteen or an employees' rest area, modular site accommodation offers the ideal solution. We've put together this guide to help you select the right modular site accommodation for your needs.

Why modular site accommodation?

Modular buildings are perfect for site accommodation because they are so versatile, time-saving, and cost-effective. They can be adapted to a wide range of needs and fitted with whatever facilities you require, from kitchens to showers and toilets.

In addition, because each modular unit can be combined in any shape or layout you need (including stacked on top of each other) it enables you to make the best use of your space.

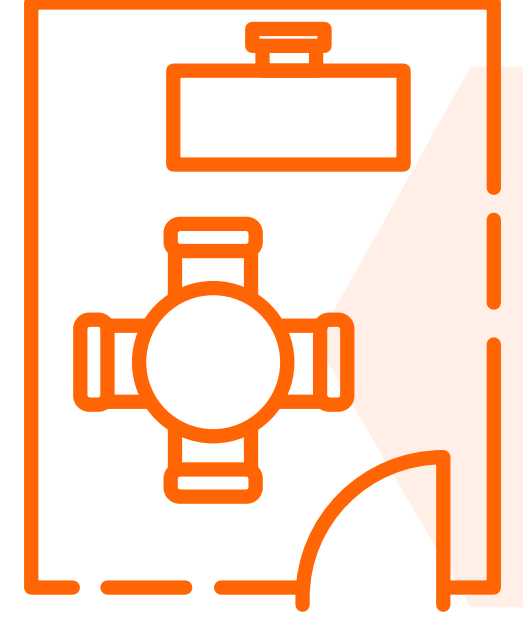


Defining your design

Modular buildings offer extensive flexibility in the design and layout of your site accommodation but make sure you ask the right questions so that you get exactly what you want.

Some crucial design aspects to consider include:

- What unit sizes are available?
- Can the units be stacked and configured to suit your site dimensions?
- Can the interior layout be configured to meet your specific needs?
- What security features are available?
- Are additional features available such as extra fire protection and energy-saving options?



Health and safety matters

Health and safety should always be a top priority on any construction project, so make sure you check with your supplier that the following will be carried out:

- Delivery and installation are completed in line with health and safety guidelines
- Thorough risk assessments will be carried out
- A low-level lifting system is used
- Non-combustible materials are used in the manufacture of all units



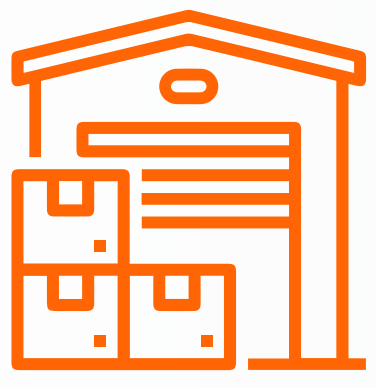
How to select the right modular site accommodation for your needs



Check the speed of delivery

Busy construction sites may need to accommodate sudden changes to the scope of the project or the number of employees, so make sure you find out how quickly your modular site accommodation can be delivered.

To ensure that it can be delivered promptly, look for a supplier who has extensive resources and the capability to deliver from stock.



Visit the factory and see recent projects

There is no better way to assess the quality of modular buildings than to visit the factory where they are made. A good supplier will be happy to show you around and arrange for you to check out some recently completed projects.



Don't compromise on quality

Check if your supplier uses newly-manufactured buildings, which will ensure higher quality and better safety and security on site. If your site accommodation is finished to a high standard, this will also have a positive impact on staff morale and visitors' perception of the site.



Ensure the highest standards of security

Construction sites are a common target for theft and vandalism, so reliable on-site security is essential. Ensure that the site accommodation doors and windows are secure enough to withstand any break-in attempts, and ask your supplier if the units comply with ISO standards.



Look at the bigger picture

Don't forget to budget for the internal layout, furniture and project management costs. If your supplier can provide more than just the outer shell, then this will help to save time and ensure that the project runs smoothly and adheres to your budget.



Find the right supplier

The overall success of your project depends mainly on choosing the right supplier. Make sure they are committed to the highest standards of health and safety, on-site security, and professionalism. They should also offer the option to extend or reconfigure the buildings at a later date.

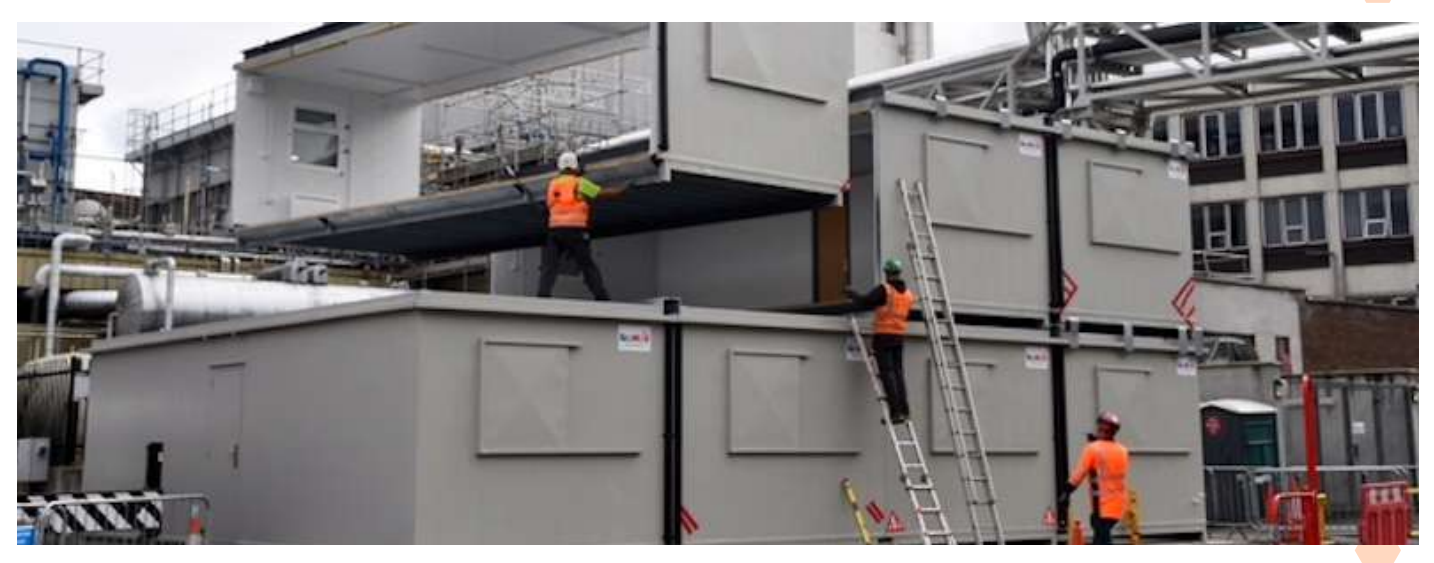
Our range of modular site accommodation

Selecting the right modular site accommodation can be a minefield, but at EcoMod, we have options to suit almost every requirement. We offer a range of highly customisable options, and our experienced team is on hand to discuss your unique needs.



The EcoSecure Anti-Vandal Building

Ireland's foremost anti-vandal portable building for sites with security requirements. The EcoSecure is fully compliant with health and safety regulations and can be linked and double-stacked, making it suitable for an extensive range of uses and industries.



The EcoSpan Secure

This highly-customisable option comes in individual 3m wide modules which connect to form large workspaces of any scale or layout. The EcoSpan Secure modules can be joined end to end, side by side or double-stacked and can be internally designed to meet any specifications.



The EcoPod Mobile Welfare Unit

Our range of super-efficient mobile welfare units can be towed to any location, providing you with the welfare facilities you need within 30 seconds of arrival.

EcoMod - Your Site Accommodation Provider

At EcoMod, we pride ourselves on providing bespoke, high-quality, structurally sound modular solutions that can be designed and adapted to suit your unique needs.

As an Irish company with over ten years of experience and a team of fifty dedicated staff, you can rest assured that you're in safe hands.

Get in touch with our experienced, friendly team at **01 862 3702** or at sales@ecomod.ie and start your modular journey today.